

VASCULAR IMAGE

The "draped aorta" sign

Polyzois Tsantrizos, MD, MSc¹, Spyros Papadoulas, MD, PhD¹, Konstantinos Nikolakopoulos MD, MSc, PhD¹, Peter Zampakis, MD, PhD², Eleftheria Spanou¹, Stavros K. Kakkos, MD, MSc, PhD, DIC, RVT³

¹Vascular Surgery Department, Patras University Hospital, Patras-Greece

²Associate Professor, Department of Radiology, Patras University Hospital, Patras, Greece

³Associate Professor & Chairman, Vascular Surgery Department, Patras University Hospital, Patras, Greece

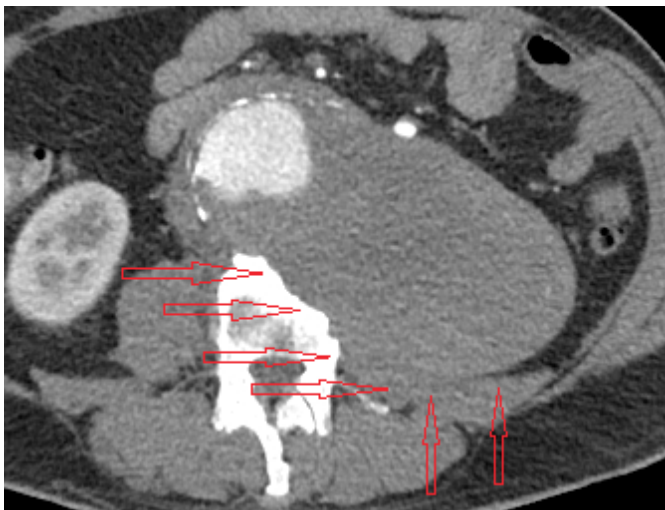


Figure 1.

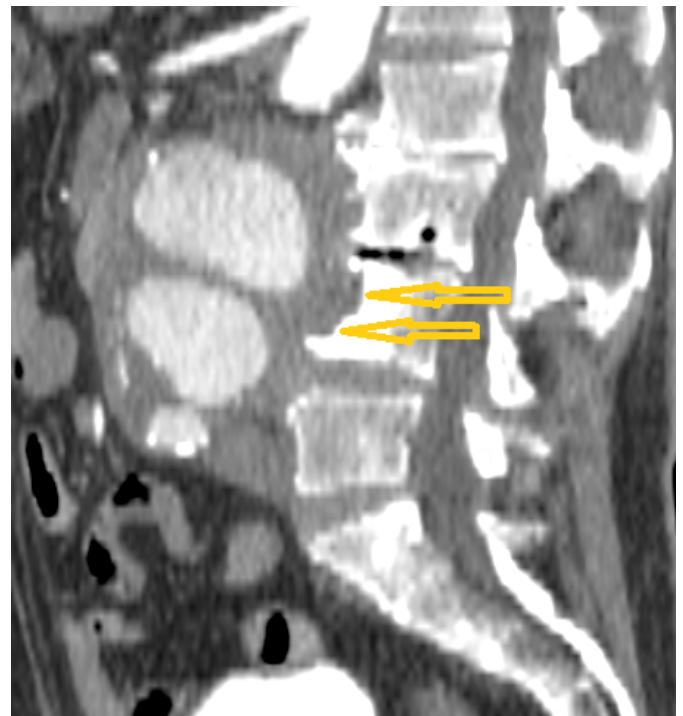


Figure 2.

A 62-year old smoker male with a past medical history of hypertension presented with chronic lumbar pain. Computed Tomography Angiography revealed a 14cm infrarenal abdominal aortic aneurysm. The posterior aneurysmal wall followed the contour of the lumbar vertebral bodies and psoas muscle, a sign known as the draped aorta sign (Fig. 1, arrows). There was also hydronephrosis on the left side. During elective open

repair the aneurysm was found to be inflammatory with tight adhesions with the duodenum and jejunum. Through a gap in the posterior part of the sac, vertebrae erosion was identified (Fig. 2, arrows). An aorto-right iliac-left femoral PTFE graft was used. Recovery was uneventful and the patient was discharged home on the 7th postoperative day. Follow-up pyelography on the 20th postoperative day revealed ureter stenosis near the confluence with the bladder and a temporary pigtail stent was placed.

Author for correspondence:

Polyzois Tsantrizos, MD, MSc

Vascular Surgery Department, Patras University Hospital, Patras-Greece

E-mail: polyzois.tsantrizos@hotmail.com

ISSN 1106-7237/ 2019 Hellenic Society of Vascular and Endovascular Surgery Published by Rotonda Publications All rights reserved. <https://www.heljves.com>

Draped aorta sign describes the imaging finding where the posterior wall of the sac is progressively 'draping' the contour of the adjacent vertebral bodies and particularly the psoas muscle, usually on the left side. Although it is considered a sign of a mycotic aneurysm or impending/chronic contained rupture, sometimes giant aneurysms may also exhibit the draped aorta sign.